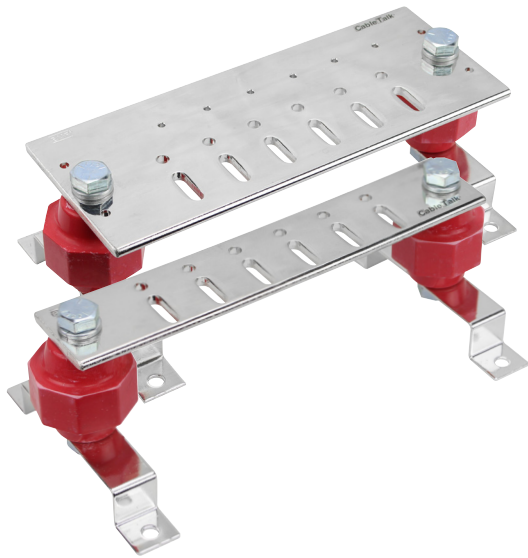


# GROUNDING BAR & BUS BARS



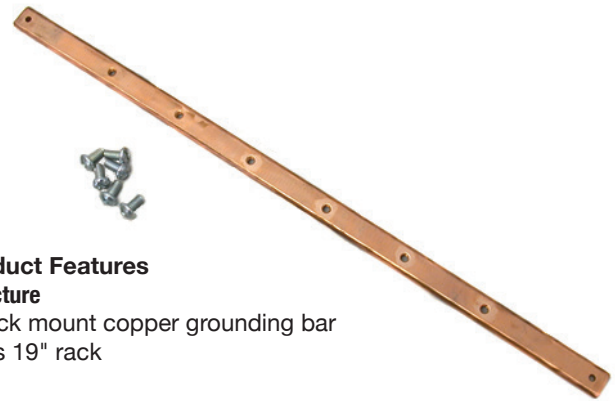
## Product Features

### Structure

- Bright tin, 200 Micro inches minimum plating with Glastic standoff insulators
- 2700 volt rated
- 180 seconds of arc resistance
- UL 94 V-O flame resistance
- Mounting holes 0.312" diameter
- Available in 2 or 4 inch width
- 10" length
- Hardware: - 1/4-20x0.75" length stainless steel Phillips machine screw (12 pcs.)
  - 1/4 stainless steel lock washer (12 pcs.)
  - 1/4-20 stainless steel hex nut (12 pcs.)

## Standard Dimensions - Copper Bus Bars

| Part No.       | Name           | Width (Inches) |
|----------------|----------------|----------------|
| CT-GIBB2X10X12 | Copper bus bar | 2"             |
| CT-GIBB4X10X12 | Copper bus bar | 4"             |



## Product Features

### Structure

- Rack mount copper grounding bar
- Fits 19" rack

## Standard Dimensions - Grounding Bar

| Part No.      | Name                 | Width (Inches) | Mounting   |
|---------------|----------------------|----------------|------------|
| CT-GB-1906-CU | Copper grounding bar | 19" EIA        | Horizontal |



## Product Features

### Structure

- Rack or cabinet mounted copper grounding bar
- Fits full height racks
- Fits full height cabinet
- 72" length
- Qty 28 1/4-20 (x2) mounting locations
- Glastic standoff insulators
- Mounting hardware for rack and cabinet included

## Standard Dimensions - Insulated Grounding Bar

| Part No.      | Name                 | Height (Inches) | Mounting |
|---------------|----------------------|-----------------|----------|
| CT-GB-7724-CU | Copper grounding bar | 77              | Vertical |