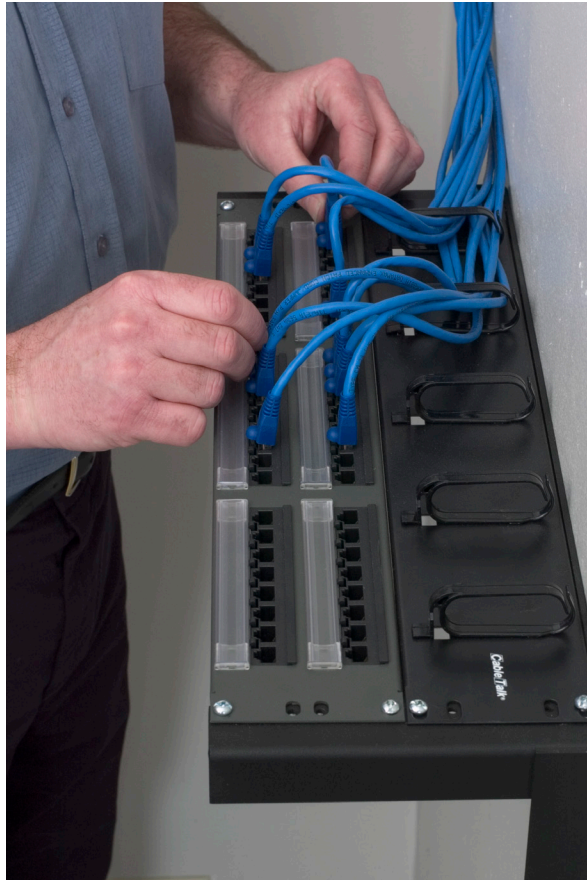


WALL/CEILING MOUNT HUB BRACKETS



Product Features

Finish

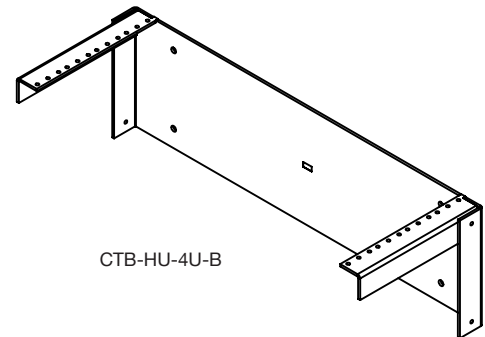
- Durable black textured powder paint finish

Structure

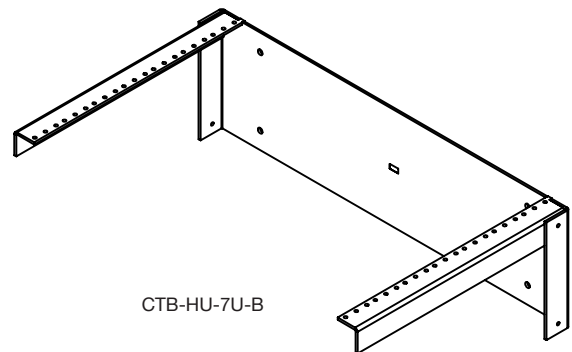
- Frame constructed of 11 GA (0.125") steel
- A solution for small networks with space constraints
- Designed to mount equipment to the wall or ceiling, allowing full access and maintaining a limited depth
- Comes standard with 10-32 tapped mounting holes with stamped U-spacing identification
- Compliant to EIA-310-D 19" standard

Options

- Available in 4 or 7 U-space sizes



CTB-HU-4U-B



CTB-HU-7U-B

Standard Dimensions Wall/Ceiling Mount Hub Brackets

Part No.	Mounting Width (EIA)	Depth (U-space)
CTB-HU-4U-B	19	4
CTB-HU-7U-B	19	7