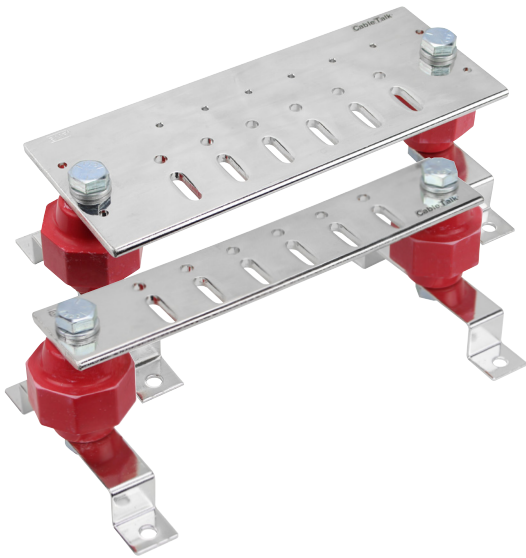


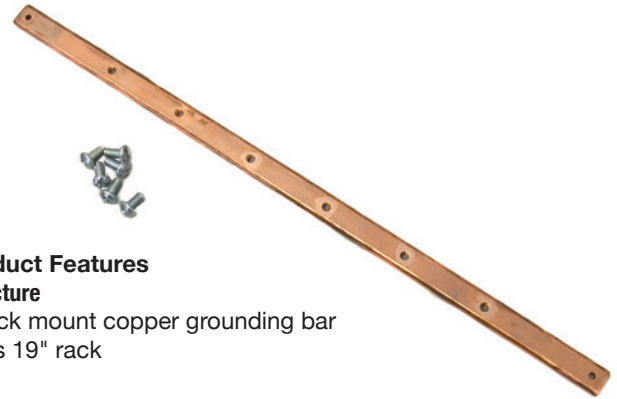
# GROUNDING BAR & BUS BARS



## Product Features

### Structure

- Rack mount copper grounding bar
- Fits 19" rack



## Standard Dimensions - Grounding Bar

Part No.	Name	Width (Inches)	Mounting
CT-GB-1906-CU	Copper grounding bar	19" EIA	Horizontal

## Product Features

### Structure

- Bright tin, 200 Micro inches minimum plating with Glastic standoff insulators
- 2700 volt rated
- 180 seconds of arc resistance
- UL 94 V-O flame resistance
- Mounting holes 0.312" diameter
- Available in 2 or 4 inch width
- 10" length
- Hardware: - 1/4-20x0.75" length stainless steel Phillips machine screw (12 pcs.)
- 1/4 stainless steel lock washer (12 pcs.)
- 1/4-20 stainless steel hex nut (12 pcs.)

## Standard Dimensions - Copper Bus Bars

Part No.	Name	Width (Inches)
CT-GIBB2X10X12	Copper bus bar	2"
CT-GIBB4X10X12	Copper bus bar	4"

## Product Features

### Structure

- Rack or cabinet mounted copper grounding bar
- Fits full height racks
- Fits full height cabinet
- 72" length
- Qty 28 1/4-20 (x2) mounting locations
- Glastic standoff insulators
- Mounting hardware for rack and cabinet included



## Standard Dimensions - Insulated Grounding Bar

Part No.	Name	Height (Inches)	Mounting
CT-GB-7724-CU	Copper grounding bar	77	Vertical