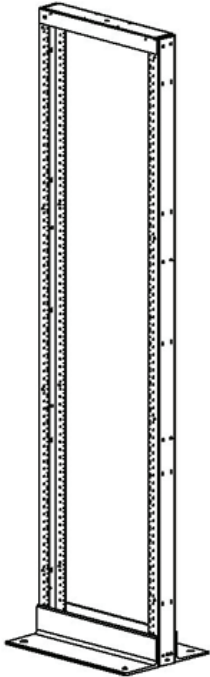


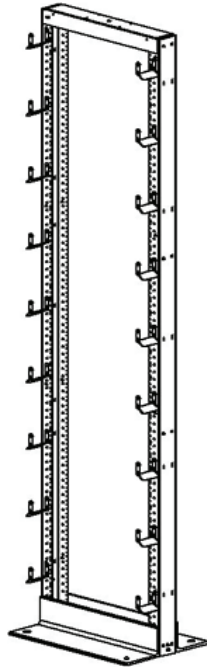
Fiber Rack System

Systèmes

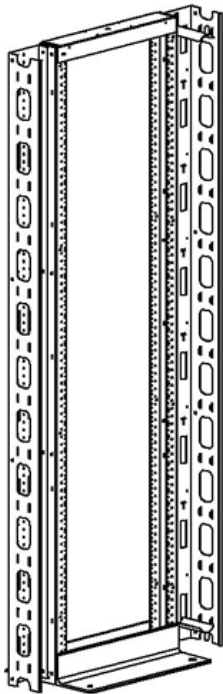
CableTalk
Systems Inc.



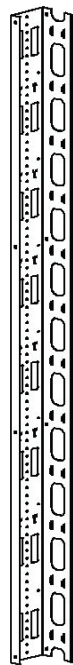
CTR-1977-DS-FL-B



CTR-1977-DS-FL-B
with CT-FL-3-B



CTR-1977-DS-FL-B with 2 -
CTR-CMS-24-FL-B and 2
CT-FL-5.5-NB-B



CTR-CMS-24-FL-B

Product Features

Finish

- Black textured powder paint finish

Structure

- Frame constructed of rugged 11 GA (0.120") steel, robotically welded and rigid
- Standard with 19" EIA 10-32 tapped mounting holes with permanently marked U-spacing identification
- 5/16" Sturdy steel base with anchor holes for mounting to floor
- Rack is standard with 1 copper 10-32x0.5"L ground stud
- All racks are tapped double-sided
- Racks can be populated with half-loop waterfalls

Options

- Vertical cable manager available, CTR-CMS-24-FL-B
- Racks can be populated with half-loop waterfalls, CT-FL-3-B and CT-FL-5.5-NB-B

Standard Dimensions

19" EIA Fibre Racks

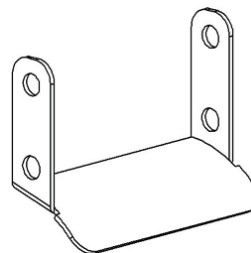
Part No.	Style	Mounting Width (EIA)	Overall Height (Inches)	Usable Space (Inches)
CTR-1977-DS-FL-B	Double sided	19	83	77

Fibre Vertical Cable Manager

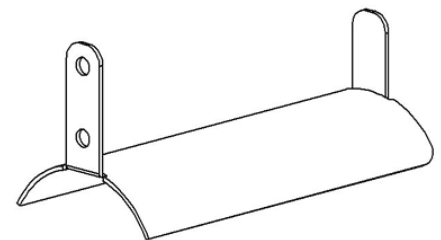
Part No.	Style	Width (Inches)	Depth (Inches)	Height (Inches)
CTR-CMS-24-FL-B	Fibre Vertical Cable Management	5.5	5.5	83

Fiber Loop

Part No.	Width (Inches)	Depth (Inches)	Height (Inches)
CT-FL-3-B	1.2	3	2.3
CT-FL-5.5-NB-B	2.5	5.5	2.5



CT-FL-3-B



CT-FL-5.5-NB-B